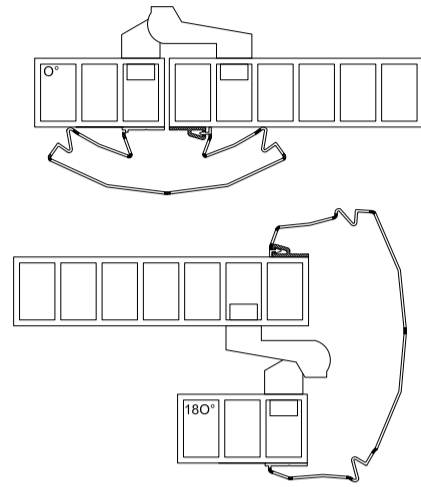


FLAT DOORS AND FRAMES

Metal, aluminium and PVC



We advise against using screws on metal, aluminium & PVC doors and frames. We therefore recommend using tape. It is often not possible to fit the narrow strip because of a different hinge type, unless the narrow strip and click strip are cut and fitted above and below the unprotected hinge. We strongly advise against this!

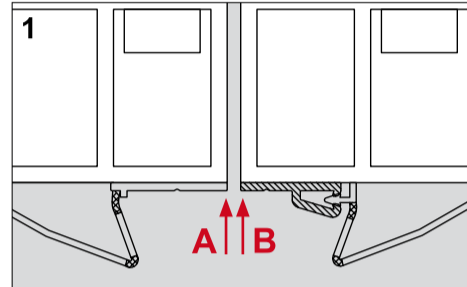
Use of Tape

See instructions in left hand column.

Draw a horizontal line at a distance of 15mm above the bottom edge of the door and also at the same point on the door frame on the inside.

WIDE STRIP ON THE INSIDE OF DOOR

Peel off the backing of the tape and first stick the lower end onto the horizontal pencil line at the bottom of the door frame. Ensure that the flat edge of the strip runs exactly along the edge of the door frame (**See diagram 1 fig A**). Having made certain that the strip is exactly level with the edge of the door frame, stick it into position by pressing firmly along the strip starting at the bottom and working upwards. Attention: The door must not come into contact with the strip fixed onto the door frame.



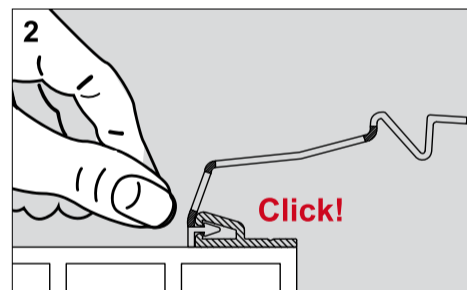
CLICK STRIP ON INSIDE OF DOOR

Peel off the backing of the tape and first stick the lower end onto the horizontal pencil line at the bottom of the door. Ensure that the edge of the strip runs exactly along the edge of the door (**See diagram 1 fig B**).

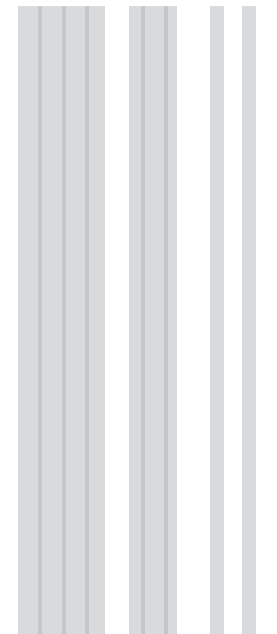
When the strip is exactly in line with the edge of the door, stick into position by pressing firmly along the strip starting at the bottom and working upwards.

Attention: The door frame must not come into contact with the strip fixed onto the door.

Lastly, click together starting at the top and working downwards.



FITTING INSTRUCTIONS

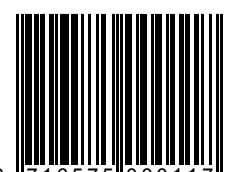


This set of Finger Alert Professional contains:

- Wide strip for inside of door
- Narrow strip for hinge side of door
- 2 click strips
- 8 pieces of positioning tape
- Screws (or tape according to choice)

Read the instructions first before fitting the strips.

Arte Viva



8 716575 000117

USE OF TAPE

The strips must first of all be made grease-free and dried, after which the tape can be applied along the whole length of the strips. For optimal adhesion it is advisable to lightly sand the contact surfaces, ensuring that dust is removed from door and frame afterwards.

To ensure correct and an optimal adhesion after mounting the strips on the door and frame, rub your fingers firmly up and down the adhesive strips for 2 minutes. Then close the door and do not open for at least 15 minutes.

USE OF STRIPS

Our strips cannot withstand rough handling. Damage could occur if, for example, they are not handled correctly when removing for maintenance. In accordance with the intended safety standards, shortening the strips to less than 180cm is not permitted.

Maintenance

The strips can be loosened at the top by carefully levering the click strip open with a screwdriver. Once a small bit is pried loose the clip strip will come away easily. Clean with lukewarm water.

Warning

When removing strips which have fitted using tape, damage may occur to the surface of doors and or frames due to the strong adhesive necessary for permanent fixing.

The manufacturer/supplier cannot be held liable for accidents or damage to the Finger Alert if this is a result of non-compliance with above fitting instructions and guidelines.



Parents should always remain alert!

For more information:

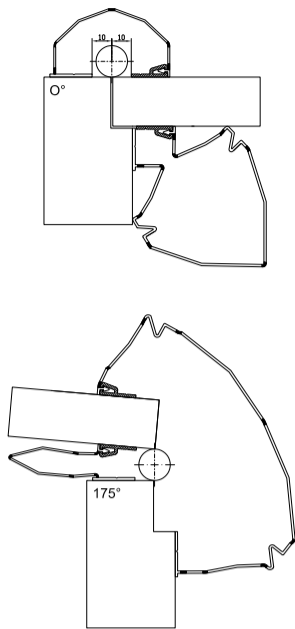
www.arteviva.nl of
www.fingeralert.com
www.cornerguard.eu
www.smokeguard.eu

Arte Viva

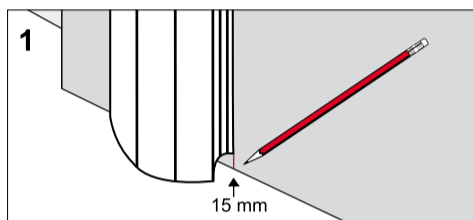
Schepenen 6 3961 LS Wijk bij Duurstede NL
 T +31 (0)343 57 69 54 F +31 (0)343 43 25 93
 E info@arteviva.nl | www.arteviva.nl

SQUARE EDGE DOORS (non Rabetted)

Maximum opening 175°

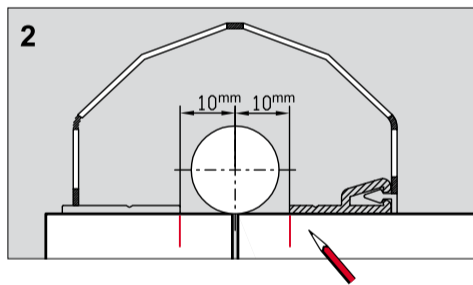


Draw a horizontal line (using a soft pencil) at a distance of 15mm from the bottom edge of the door and at same point on the door frame both on the inside and hinge side (See diagram 1).



Hinge side of the door

Draw a vertical line at a distance of 10mm from the centre line of the hinge on both door and door frame (See diagram 2).

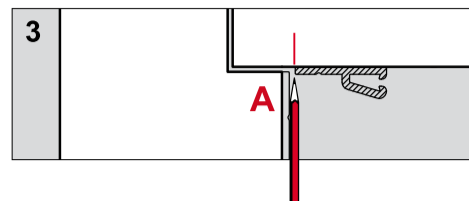


When using tape follow the instructions "Use of Tape" in the left hand column on the back

Stick the strips of the positioning tape at the top and bottom of the smooth sides of both the wide and narrow strip and both click strips. If not using tape, drill a hole using a 3 mm bit every 20cm in the groove provided in all the strips.

WIDE STRIP FOR INSIDE OF DOOR

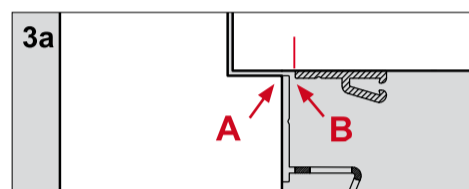
Shut the door and draw a vertical pencil line along the door- frame onto the door using the frame to draw a straight line (see diagram 3).



Peel off the backing of the pieces of positioning tape and firstly stick the lower end onto the horizontal line at the bottom of the frame. Make sure that the edge of the strip runs exactly in line with the edge of the door frame (See diagram 3a fig. A).

When the strip is absolutely in line with the edge of the door frame, stick the top end of the strip in place. Attention: The door must never make contact with the strip fitted on the door frame.

After ensuring that the strip and door frame are properly aligned, drill holes into the door frame every 20cm using the pre-drilled holes in the strip, then screw into place.

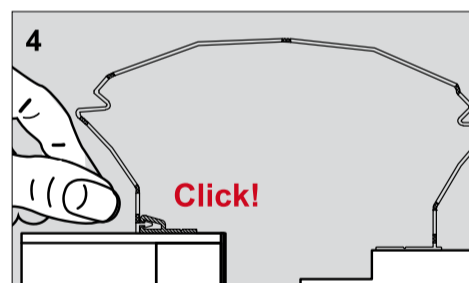


Click strip

Peel off the backing of the pieces of positioning tape and stick the lower end onto the horizontal line at the bottom of the door, again making sure it is correctly in line. When the strip is in line with the pencil line, stick the top end onto the door (press firmly). Make sure that the strips cannot make contact with each other.

Check diagram 3a fig. B for the correct positioning.

Ensuring that the two strips are properly aligned, drill holes into the door every 20cm using the pre-drilled holes in the strip, then screw into place. Finally, open the door and click together from top to bottom (See diagram 4).



NARROW STRIP ON HINGE SIDE OF DOOR

Shut the door. Peel off the backing of the positioning tape and then stick the narrow strip onto the door frame, starting at the bottom on the horizontal line 15mm above the bottom edge.

Attention: The edge of the smooth strip must be exactly in line with the vertical line already drawn on the door frame.

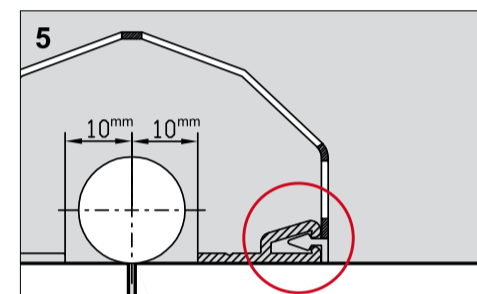
After ensuring that the strip runs exactly along the straight line on the door frame, drill holes into the frame every 20cm using the pre-drilled holes in the strip, then screw into place.

Click strip

Shut the door and peel off the backing of the positioning tape. Then stick the lower end of the click strip exactly onto the horizontal pencil line. Attention: The click strip must be placed exactly along the vertical line already drawn on the door.

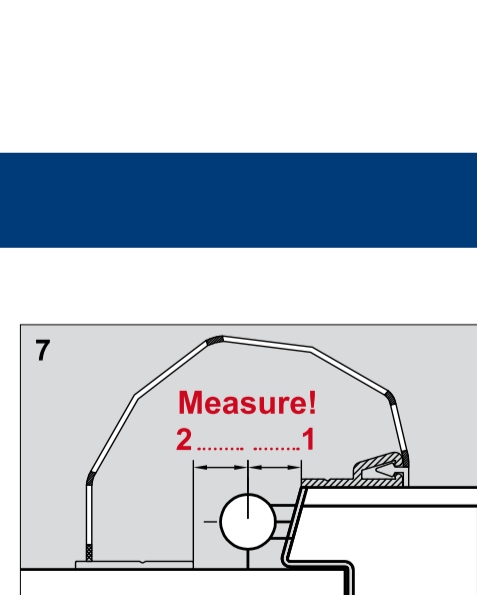
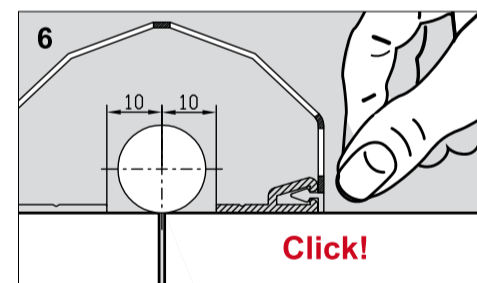
The opening of the click strip must always face away from the hinge! (See diagram 5).

Ensuring that the click strip is properly aligned to the straight line on the door, drill holes into the door every 20cm using the pre-drilled holes in the strip, then screw into place.



Clicking the narrow strip into the click strip

After both narrow and click strip have been correctly fitted, the edge of the narrow strip can be clicked into the click strip starting at the top (See diagram 6).



If not using tape, drill a hole using a 3 mm bit every 20cm in the groove provided in all strips.

Continue fitting as per instructions for square edge doors.

INTRODUCTION

Whenever possible, use screws on wooden doors and door frames. Tape is more suitable for doors made of other material (metal, aluminium & PVC).

The Finger Alert Professional strips should, in principle, not be fitted to the exterior of outside doors. Exposure to the elements and sub-zero temperatures can cause rapid deterioration making the plastic brittle, whereby cracks may appear

If a door opens further than stated in these instructions, as may for example occur with hinges which protrude beyond the door (so-called cantilever hinges), the supplier cannot be held responsible for any damage which may arise from this. The angle of opening can effectively be limited by the use of door-closers or door-stops.

Important

If the strips are not fitted exactly in line with the edge of the frame, door or pencil line, the supplier cannot be held responsible for any possible damage to the strip!

Square edge door without strip on hinge side:
Maximum opening 180° degrees

Square edge door with strip on hinge side:
Maximum opening 175° degrees

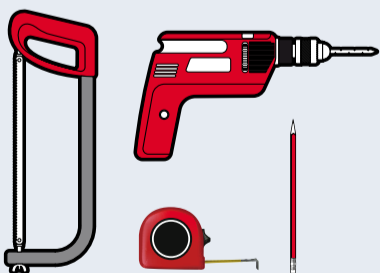
Rabetted door: maximum opening 170° degrees

Special doors: maximum opening 22cm between door and door frame

Maximum thickness of doors: 7cm

REQUIREMENTS FOR FITTING THE FINGER ALERT

- Metal saw
- Drill with 3 mm bit (max)
- Soft pencil
- Tape measure



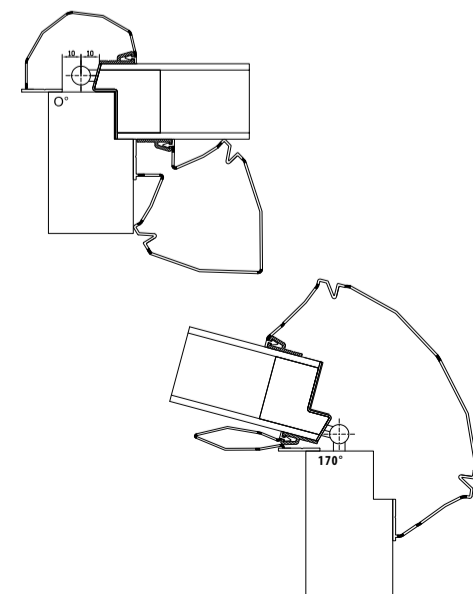
INCLUDED

- 8 pieces of positioning tape
- 2 click strips
- 1 narrow strip for the hinge side of the door
- 1 wide strip for the inside of the door
- Screws* (or tape according to choice)

* Round-headed screws 3.5 x 13mm. Only for use on wooden doors and frames. For metal, Aluminium and PVC doors we recommend using tape.

RABETTED DOORS

MAXIMUM OPENING 170°



Draw a horizontal line 15mm above the bottom edge of the door and also at the same point on the door frame on both the inside and hinge side.

Hinge side of door

Measure the distance between the edge of the rabetted door and the centre line of the hinge (See diagram 7 fig. 1). Using this same measurement taken from the centre line of the hinge to the door frame, draw a vertical line on the frame (See diagram 7 fig. 2).

When using tape follow the instructions "Use of Tape" in the left hand column on the back

Stick the strips of the positioning tape at the top and bottom of the smooth sides of both the wide and narrow strip and both click strips.