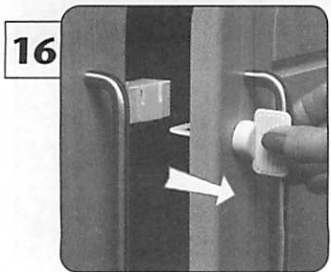
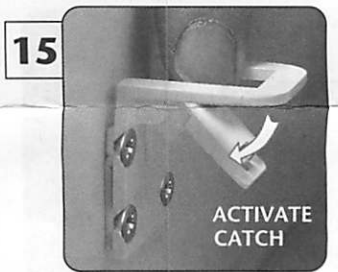
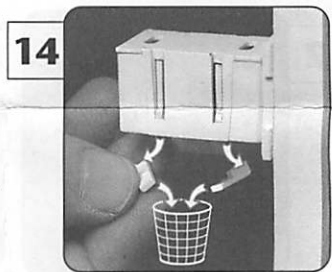
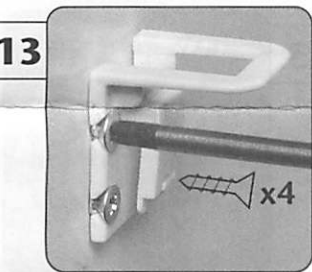
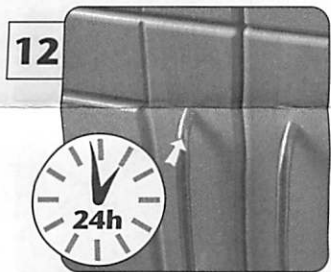
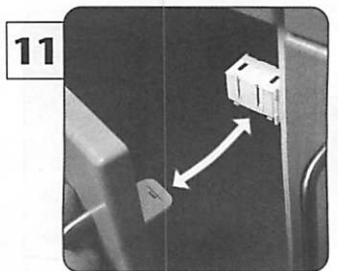
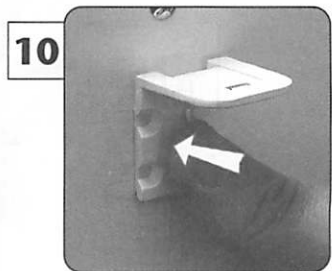
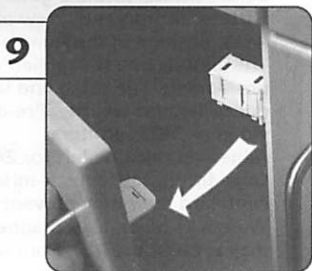
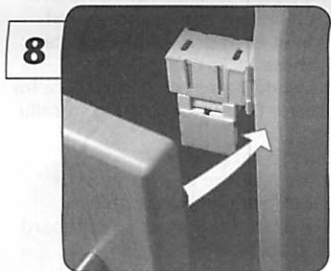
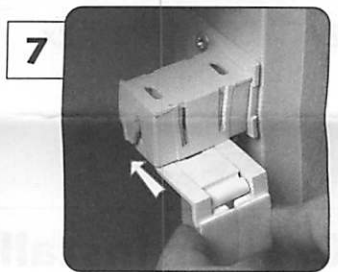
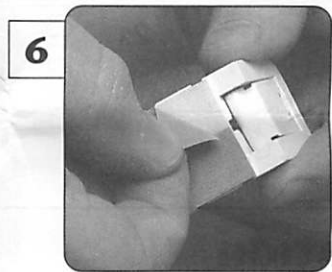
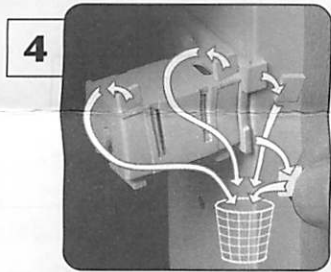
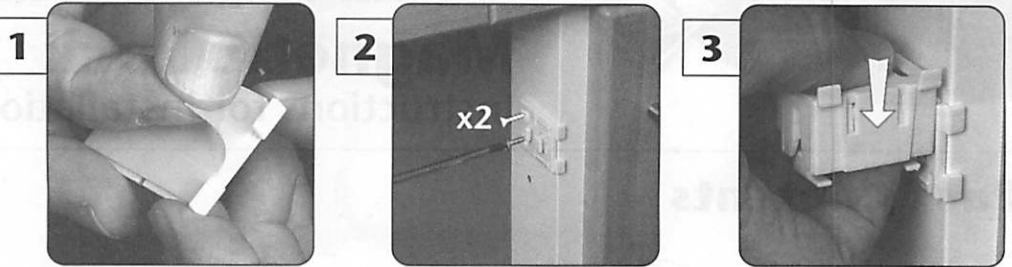
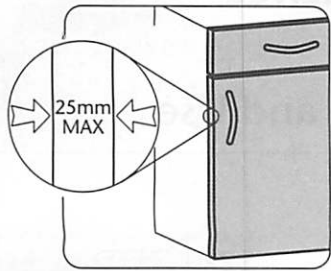
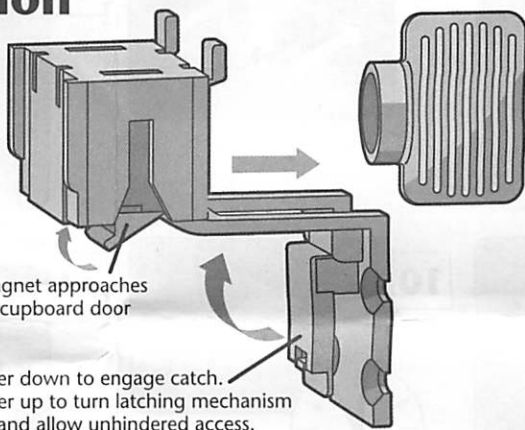


# Cupboard Installation



## Operation



Catch lifts when magnet approaches enabling drawer or cupboard door to be opened.

Lever down to engage catch.  
Lever up to turn latching mechanism off and allow unhindered access.

**IMPORTANT**  
Keep magnetic key on a high shelf or child inaccessible place.  
Additional keys are available from:  
[www.clippasafe.co.uk](http://www.clippasafe.co.uk)

## Trouble-shooting

In case of any difficulty with the installation or operation of your Magnetic Locks, please contact the careline or service department below.

Clippasafe Ltd.,  
Lanthwaite Road, Clifton,  
Nottingham. NG11 8LD. England.  
Fax: 0115 984 5554  
E-mail: [sales@clippasafe.co.uk](mailto:sales@clippasafe.co.uk)

Website: [www.clippasafe.co.uk](http://www.clippasafe.co.uk)

©Clippasafe Ltd 2011 - 71/5/Feb2011



CLIPPASAFE MODEL No.71/5

Clippasafe

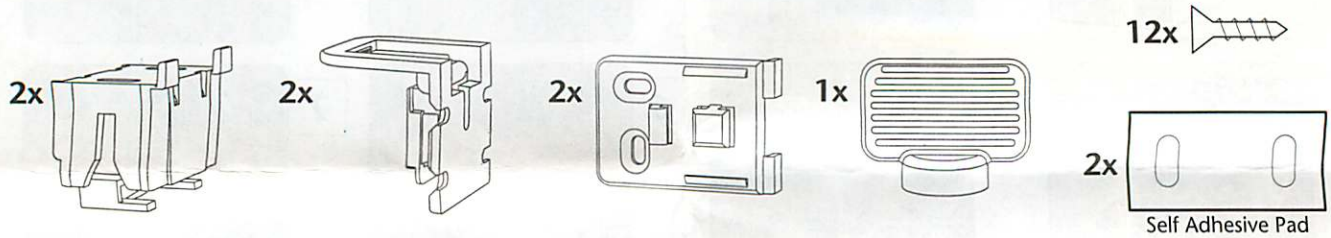


**IMPORTANT - READ INSTRUCTIONS CAREFULLY AND KEEP FOR FUTURE REFERENCE**

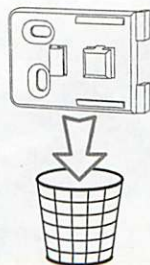
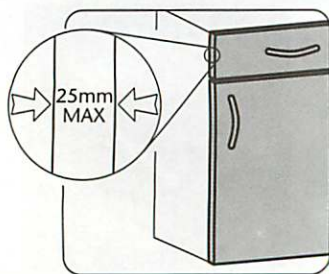
# Magnetic Lock

Instructions for Installation and Use

## Pack Contents



## Drawer Installation



### IMPORTANT

Before fitting, locate a good fixing position clear from furniture fixtures, fittings and screw or bolt heads. When fitting several locks, fit them in the same position in each drawer or cupboard. The adhesive pads supplied with these locks enable easy positioning. The catch and latch *should be screwed into place* for durability and security. Pre-drill screw holes when fitting to solid wood or MDF furniture.

Adhesives must be left for 24 hours to set properly.

Once fitted, subsequent misalignment of the drawer front or cupboard door may prevent the lock from working correctly. Warning - Metallic or magnetic items in the drawer or cupboard may prevent the lock from working correctly.

