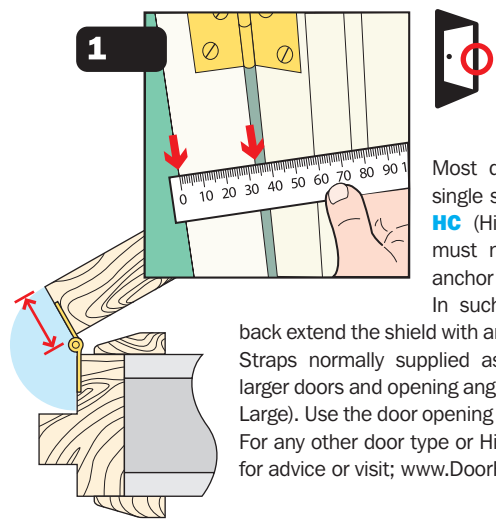


Accurate measuring guide

Full risk assessment and certified installation service available



Most doors can be shielded with a single standard Door Finger Protector® **HC** (Hinge Cavity) shield. The shield must not be allowed to act like an anchor restricting the door's full swing. In such cases you can easily piggy-back extend the shield with another shield using Anti-Implode Straps normally supplied as **HC-X** (Extended). For much larger doors and opening angles install the **HCL** (Hinge Cavity Large). Use the door opening guide to identify shield required. For any other door type or Hinge Pin side of door please call for advice or visit; [www.DoorFingerProtector.co.uk](http://www.DoorFingerProtector.co.uk)

Maximum door opening angle

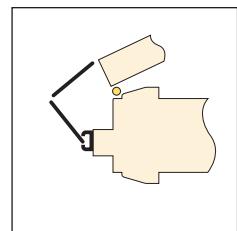


Door thickness	up to 90°	up to 135°	up to 180°
up to 33mm	1 x HC	1 x HC	1 x HC
up to 45mm	1 x HC	2 x HC 1 x HCL	2 x HC 1 x HCL
up to 60mm	1 x HC	2 x HC 1 x HCL	2 x HC 1 x HCL
up to 100mm	2 x HC 1 x HCL	2 x HCL	2 x HCL

When extending the shield ensure that anti implode straps are used.

1 shield section

On average 9 out of 10 doors

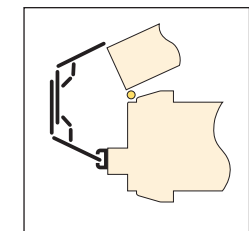


Follow stages:

1-21

2 shield sections

On average 1 out of 10 doors



Follow stages:

1-9 A-F 10-21



**ADVICE LINE**  
01708 855777  
If in any doubt call us for helpful advice

# Door Finger Protector® **HC HCL** Hinge Cavity Fitting Instructions

Please contact the **Safety Assured Advice Line on 01708 855777** if you need instructions or accessories for other door types e.g. PVCu, Crittall™ steel, aluminium, glass, pivot, bi-fold etc.

Please follow these instructions carefully. Failure to do so may adversely affect the performance of your Door Finger Protector®. Liability will not be accepted due to failure to fit the device strictly in accordance with the meaning of these instructions. YOUR STATUTORY RIGHTS ARE NOT AFFECTED. Ed.4 03.11

**2**

**It is essential to thoroughly clean and degrease the door and frame. Use a household cleaner with degreasing agent\*.**

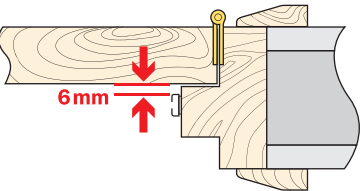
Scrape off all foam residue left by any previous installation.

\*Call Advice Line if unsure of correct cleaner – it's important that the cleaner does NOT contain Lanolin or any oil based ingredient.

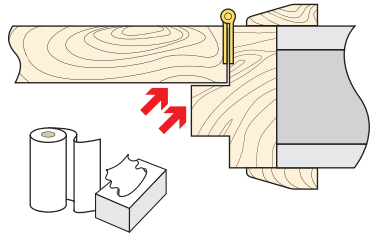
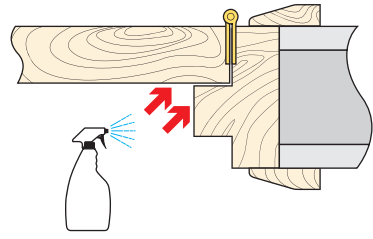
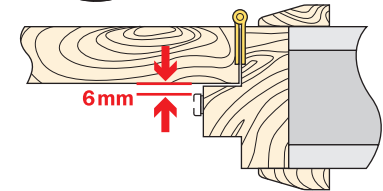
**3**

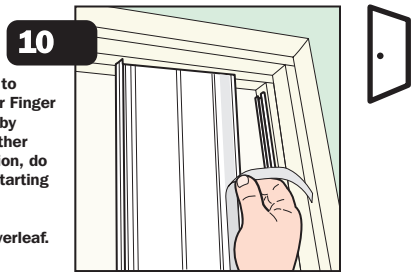
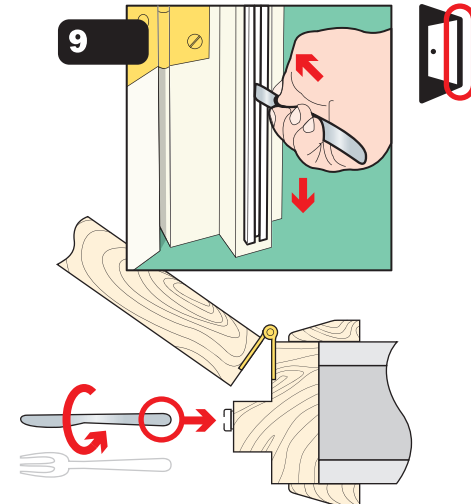
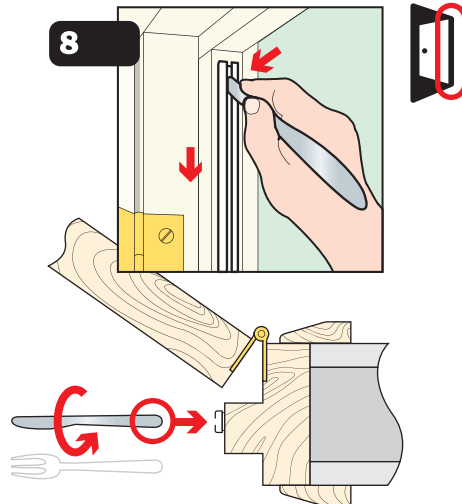
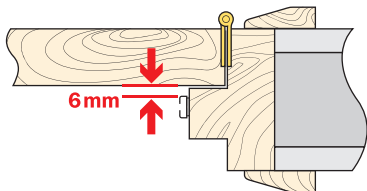
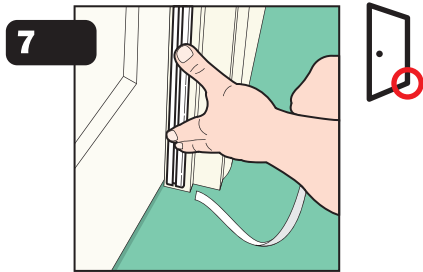
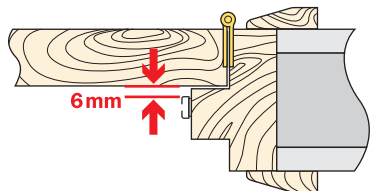
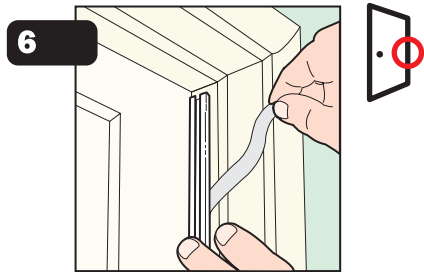
**It is important (even on freshly painted/varnished surfaces) to scrub the surface until clean and dry with paper towel before fitting product**

**4**



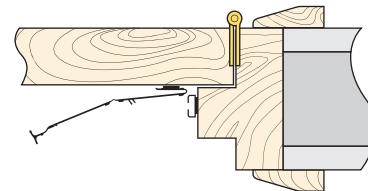
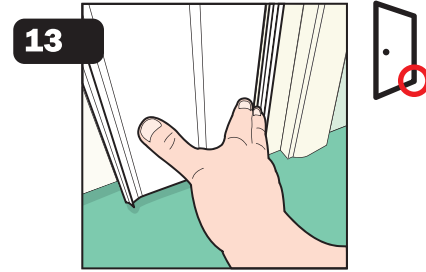
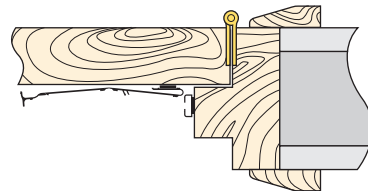
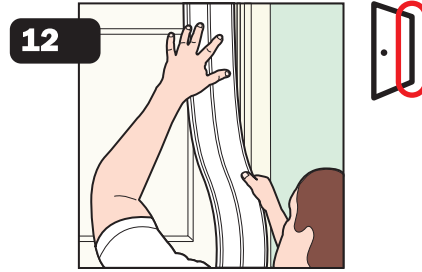
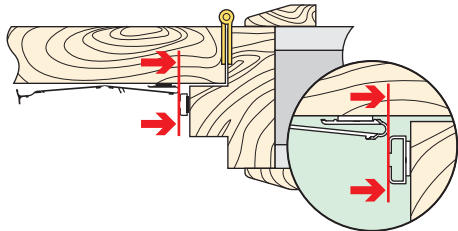
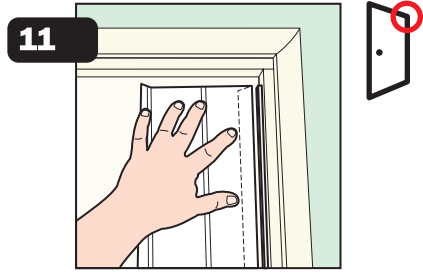
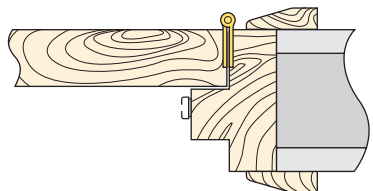
**5**

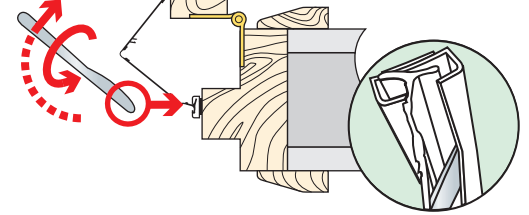
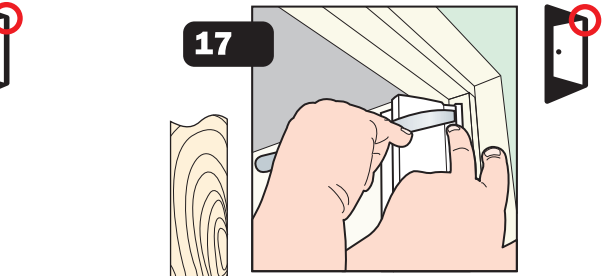
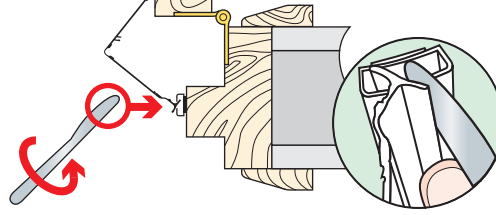
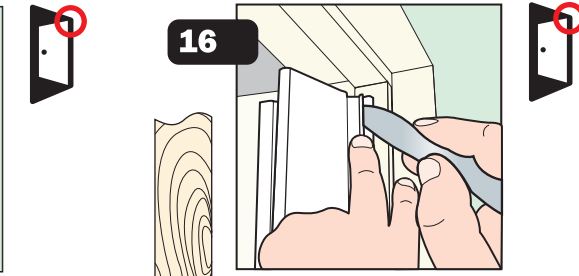
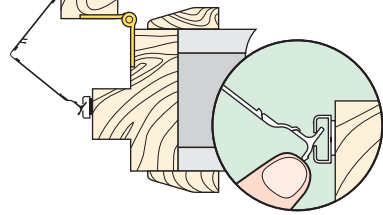
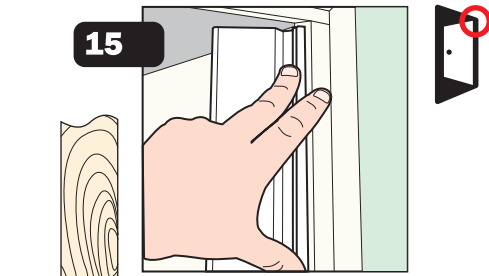
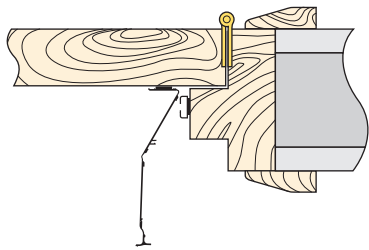
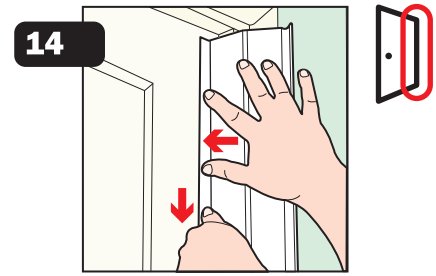




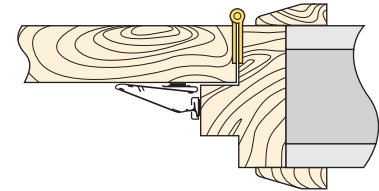
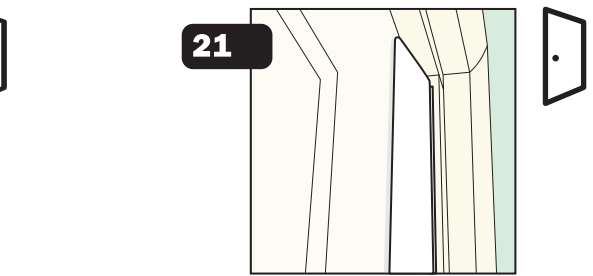
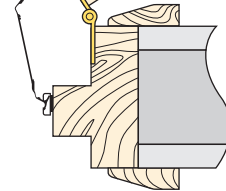
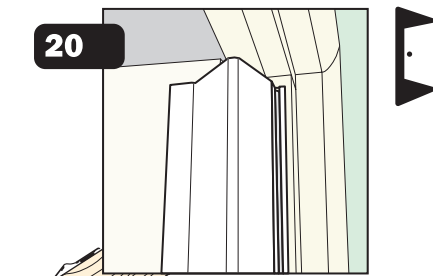
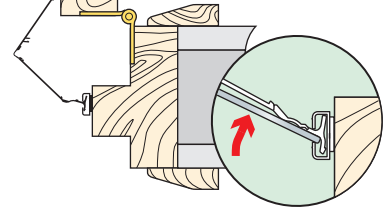
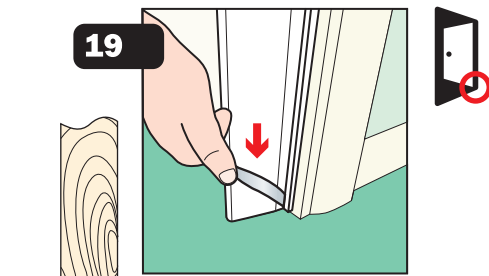
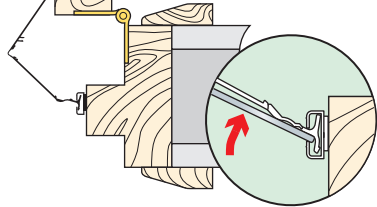
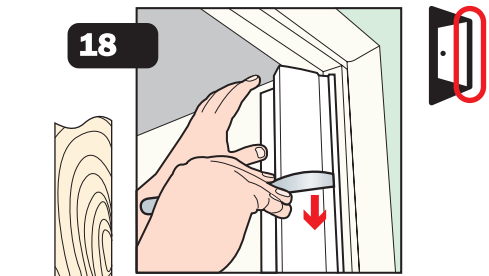
If you need to extend Door Finger Protector® by adding another shield section, do so before starting stage 10.

See 'A-F' overleaf.

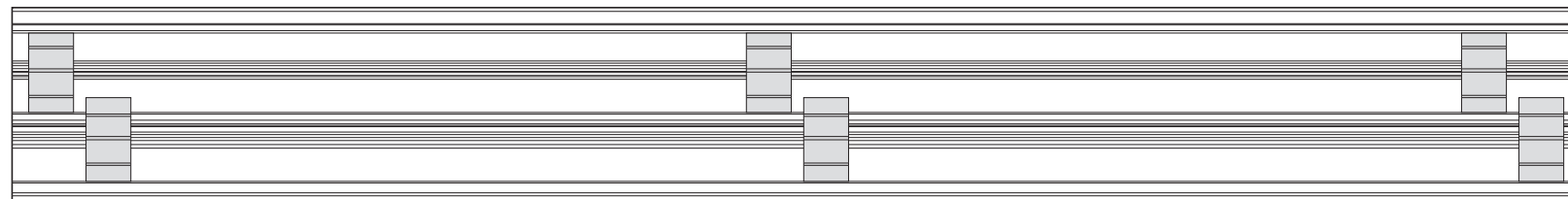
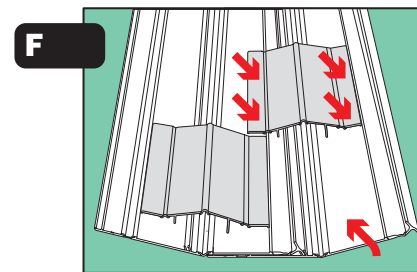
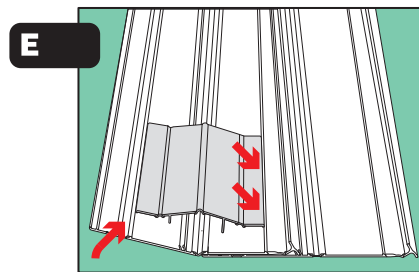
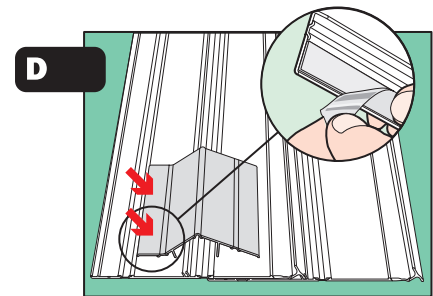
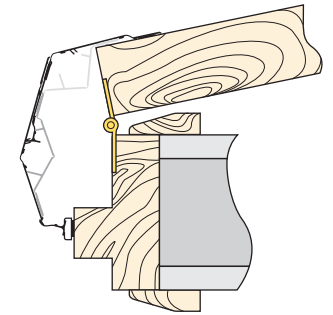
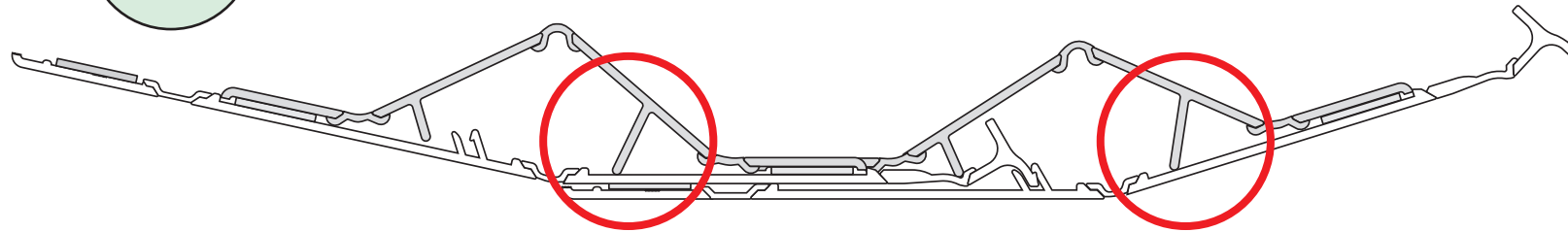
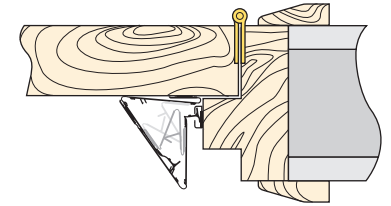
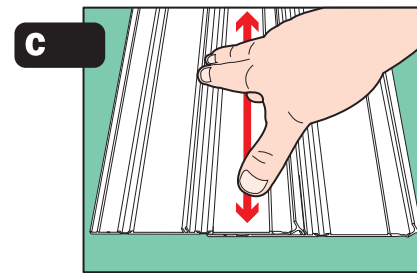
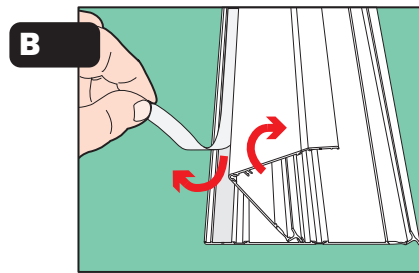
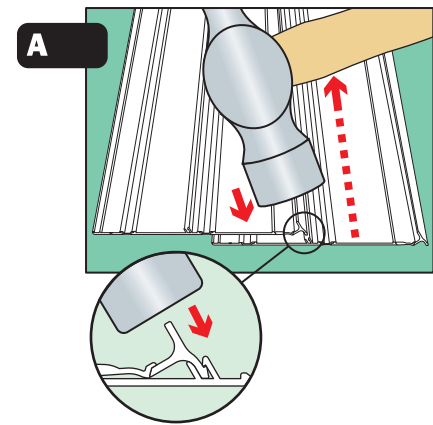




To temporarily unclip the shield for hinge access or door removal reverse stages 17 and 16 sliding knife downwards.



**Extending Door Finger Protector® shield section** for doors opening beyond the span of one hinge shield section



TECHNICAL:  
[www.doorfingerprotector.co.uk](http://www.doorfingerprotector.co.uk)

CERTIFIED INSTALLATION:  
[www.safetyassured.com](http://www.safetyassured.com)

**Safety Assured Limited**

Innovation House  
 385 Chepstow Avenue  
 Hornchurch, Essex RM12 6AU  
 United Kingdom

T: +44 (0)1708 855 777  
 F: +44 (0)1708 855 125  
 E: [info@safetyassured.com](mailto:info@safetyassured.com)